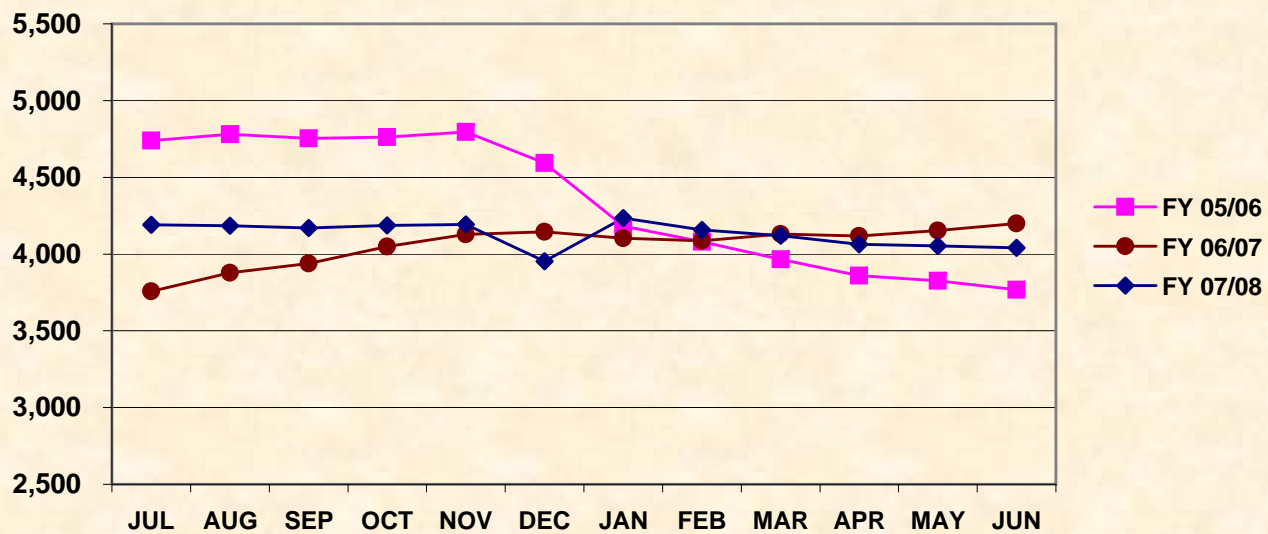


KCSP CASES BY FISCAL YEAR

STATEWIDE MONTHLY TOTALS

MONTH	FY02/03	FY03/04	FY 04/05	FY 05/06	FY 06/07	FY 07/08
JUL	2,999	3,992	4,628	4,739	3,757	4,190
AUG	3,204	4,037	4,667	4,780	3,879	4,185
SEP	3,361	4,129	4,663	4,754	3,939	4,169
OCT	3,509	4,261	4,738	4,763	4,050	4,186
NOV	3,626	4,313	4,805	4,795	4,129	4,192
DEC	3,761	4,425	4,894	4,594	4,145	3,954
JAN	3,795	4,427	4,858	4,182	4,103	4,235
FEB	3,829	4,440	4,807	4,080	4,087	4,158
MAR	3,814	4,455	4,788	3,966	4,131	4,119
APR	3,843	4,508	4,736	3,860	4,117	4,063
MAY	3,879	4,569	4,745	3,826	4,153	4,053
JUN	3,893	4,596	4,767	3,768	4,200	4,041
Average	3,626	4,346	4,758	4,342	4,058	4,129
Total	43,513	52,152	57,096	52,107	48,690	49,545

KCSP Cases by Fiscal Year Statewide Monthly Totals

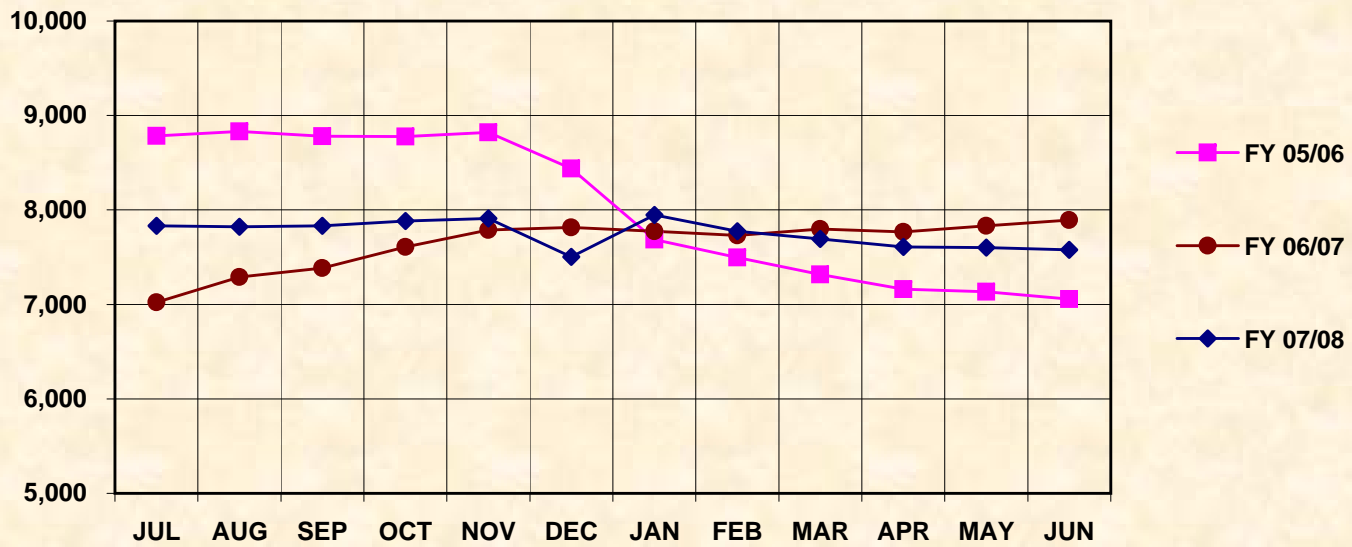


KCSP RECIPIENTS BY FISCAL YEAR

STATEWIDE MONTHLY TOTALS

MONTH	FY 02/03	FY 03/04	FY 04/05	FY 05/06	FY 06/07	FY 07/08
JUL	5,525	7,344	8,548	8,783	7,022	7,832
AUG	5,878	7,435	8,649	8,831	7,289	7,821
SEP	6,141	7,587	8,628	8,782	7,384	7,831
OCT	6,439	7,818	8,758	8,778	7,609	7,883
NOV	6,646	7,907	8,896	8,821	7,787	7,911
DEC	6,906	8,163	9,042	8,437	7,814	7,504
JAN	6,973	8,159	8,959	7,687	7,774	7,948
FEB	7,035	8,184	8,907	7,498	7,730	7,775
MAR	7,013	8,201	8,858	7,316	7,798	7,694
APR	7,056	8,311	8,732	7,161	7,769	7,608
MAY	7,110	8,402	8,786	7,134	7,832	7,601
JUN	7,147	8,470	8,843	7,057	7,892	7,577
Average	6,656	7,998	8,801	8,024	7,642	7,749
Actual	79,869	95,981	105,606	96,285	91,700	92,985

KCSP RECIPIENTS BY STATE FISCAL YEAR Statewide Monthly Totals



KCSP PAYMENTS ISSUED BY FISCAL YEAR

STATEWIDE MONTHLY TOTALS

MONTH	FY 02/03	FY 03/04	FY 04/05	FY 05/06	FY 06/07	FY 07/08
JUL	\$1,240,192	\$1,652,044	\$1,918,122	\$1,972,075	\$1,986,309	\$2,211,443
AUG	\$1,315,892	\$1,668,502	\$1,942,305	\$1,988,691	\$2,054,399	\$2,211,625
SEP	\$1,390,045	\$1,717,822	\$1,944,324	\$1,964,396	\$2,089,832	\$2,216,398
OCT	\$1,454,134	\$1,768,169	\$1,975,940	\$1,960,992	\$2,141,562	\$2,227,551
NOV	\$1,501,431	\$1,778,697	\$2,002,942	\$1,971,388	\$2,201,540	\$2,239,151
DEC	\$1,551,415	\$1,837,477	\$2,032,574	\$1,884,802	\$2,210,963	\$2,092,725
JAN	\$1,561,135	\$1,819,568	\$1,998,067	\$1,709,480	\$2,185,975	\$2,236,647
FEB	\$1,573,364	\$1,833,379	\$1,993,252	\$1,677,437	\$2,179,395	\$2,190,394
MAR	\$1,576,526	\$1,834,639	\$1,977,290	\$1,638,772	\$2,203,106	\$2,168,417
APR	\$1,579,573	\$1,865,627	\$1,946,895	\$1,600,853	\$2,180,917	\$2,141,915
MAY	\$1,598,712	\$1,874,818	\$1,964,158	\$1,594,857	\$2,214,889	\$2,150,119
JUN	\$1,599,532	\$1,896,612	\$1,982,965	\$1,576,946	\$2,223,030	\$2,148,157
Average \$	\$1,495,163	\$1,795,613	\$1,973,236	\$1,795,057	\$2,155,993	\$2,186,212
Total \$	\$17,941,951	\$21,547,354	\$23,678,834	\$21,540,689	\$25,871,917	\$26,234,542

KCSP PAYMENTS ISSUED BY STATE FISCAL YEAR

Statewide Monthly Totals

